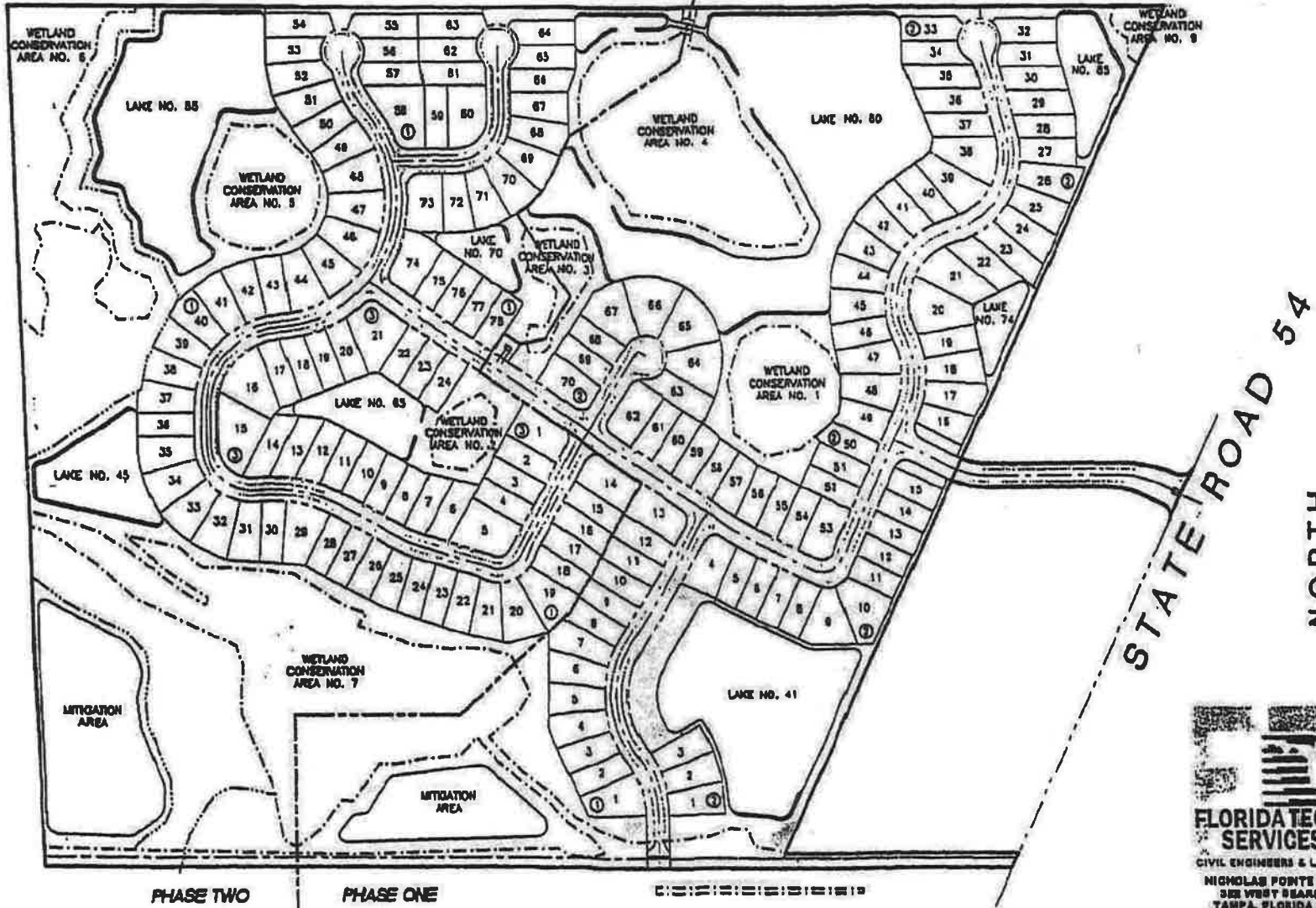


ABERDEEN LAKES

PHASE TWO

PHASE ONE



STATE ROAD 54
NORTH

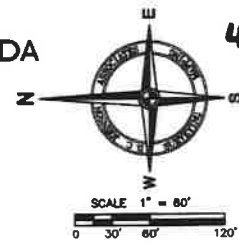
FLORIDA TECHNICAL SERVICES, INC.
CIVIL ENGINEERS & LAND PLANNERS
NICHOLAS FONTE OFFICE PARK
322 WEST BEARSS AVENUE
TAMPA, FLORIDA 33613-1228
PH: (813) 963-0289 Fax: 963-0638

ABERDEEN - PHASE ONE

SECTION 10, TOWNSHIP 26 SOUTH, RANGE 20 EAST, PASCO COUNTY, FLORIDA

PLAT BOOK
PAGE
SHEET 5 OF 8

4/137

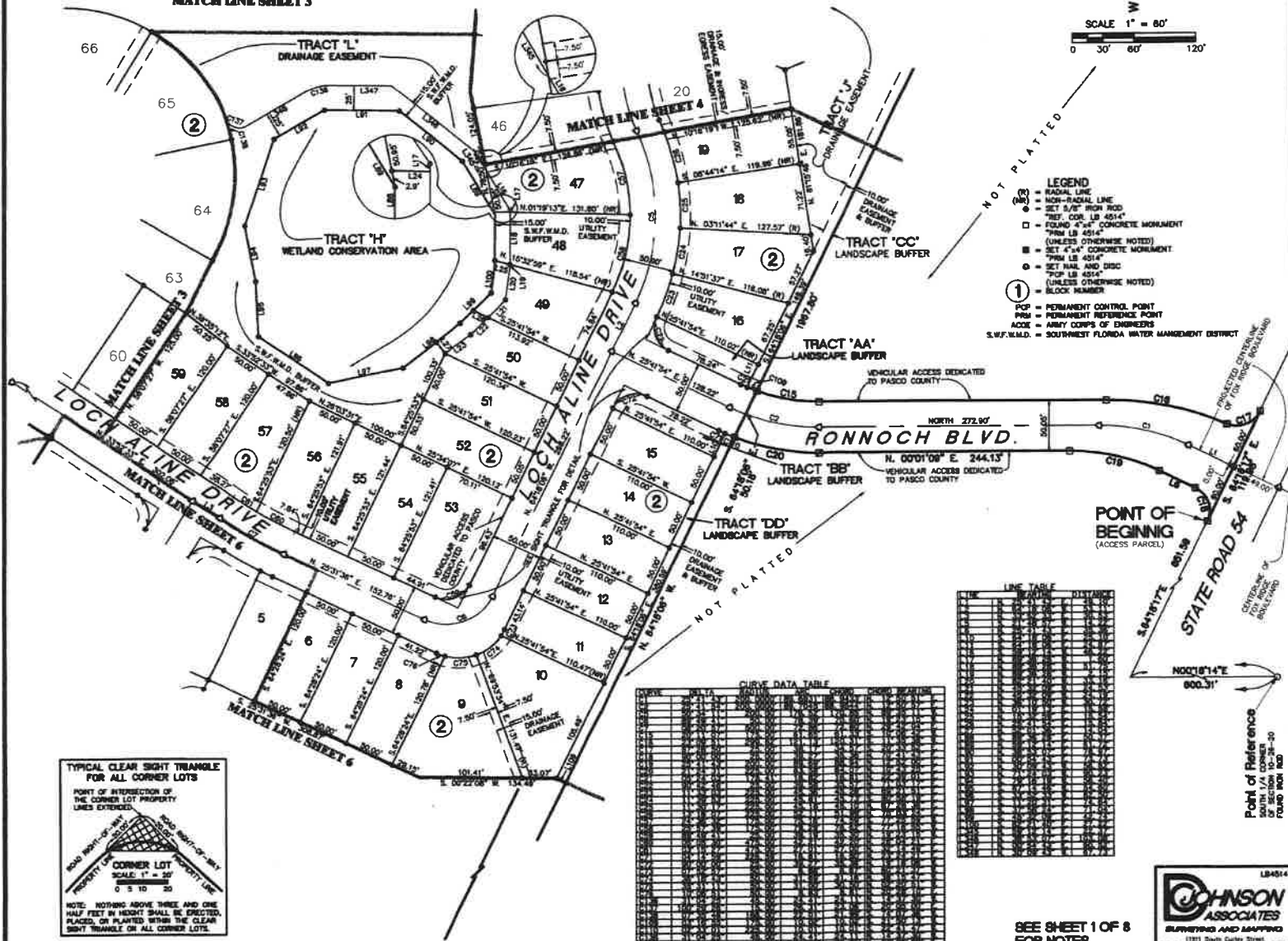


MATCH LINE SHEET 3

MATCH LINE SHEET 4

NOT PLATTED

- LEGEND**
- RACIAL LINE
 - NON-RACIAL LINE
 - SET 3/8" IRON ROD
 - REF. COR. LB 4514"
 - FOUND 4"x4" CONCRETE MONUMENT
 - FROM LB 4514" (UNLESS OTHERWISE NOTED)
 - SET 4"x4" CONCRETE MONUMENT
 - SET NAIL AND DISC
 - "POP" LB 4514" (UNLESS OTHERWISE NOTED)
 - ① BLOCK NUMBER
 - POP = PERMANENT CONTROL POINT
 - PRM = PERMANENT REFERENCE POINT
 - ACE = ARMY CORPS OF ENGINEERS
 - S.W.F.W.M.D. = SOUTHWEST FLORIDA WATER MANAGEMENT DISTRICT



CURVE DATA TABLE

STATION	CHORD BEARING	CHORD DISTANCE	CHORD CURVE DISTANCE	CHORD CURVE DISTANCE	CHORD CURVE DISTANCE
0+00	N. 111.52° E.	111.52	111.52	111.52	111.52
1+00	N. 111.52° E.	111.52	111.52	111.52	111.52
2+00	N. 111.52° E.	111.52	111.52	111.52	111.52
3+00	N. 111.52° E.	111.52	111.52	111.52	111.52
4+00	N. 111.52° E.	111.52	111.52	111.52	111.52
5+00	N. 111.52° E.	111.52	111.52	111.52	111.52
6+00	N. 111.52° E.	111.52	111.52	111.52	111.52
7+00	N. 111.52° E.	111.52	111.52	111.52	111.52
8+00	N. 111.52° E.	111.52	111.52	111.52	111.52
9+00	N. 111.52° E.	111.52	111.52	111.52	111.52
10+00	N. 111.52° E.	111.52	111.52	111.52	111.52

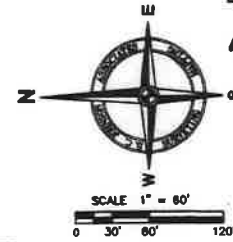
LINE TABLE

LINE	BEARING	DISTANCE	STATION
1	N. 111.52° E.	111.52	0+00
2	N. 111.52° E.	111.52	1+00
3	N. 111.52° E.	111.52	2+00
4	N. 111.52° E.	111.52	3+00
5	N. 111.52° E.	111.52	4+00
6	N. 111.52° E.	111.52	5+00
7	N. 111.52° E.	111.52	6+00
8	N. 111.52° E.	111.52	7+00
9	N. 111.52° E.	111.52	8+00
10	N. 111.52° E.	111.52	9+00
11	N. 111.52° E.	111.52	10+00

SEE SHEET 1 OF 8 FOR NOTES



41/136

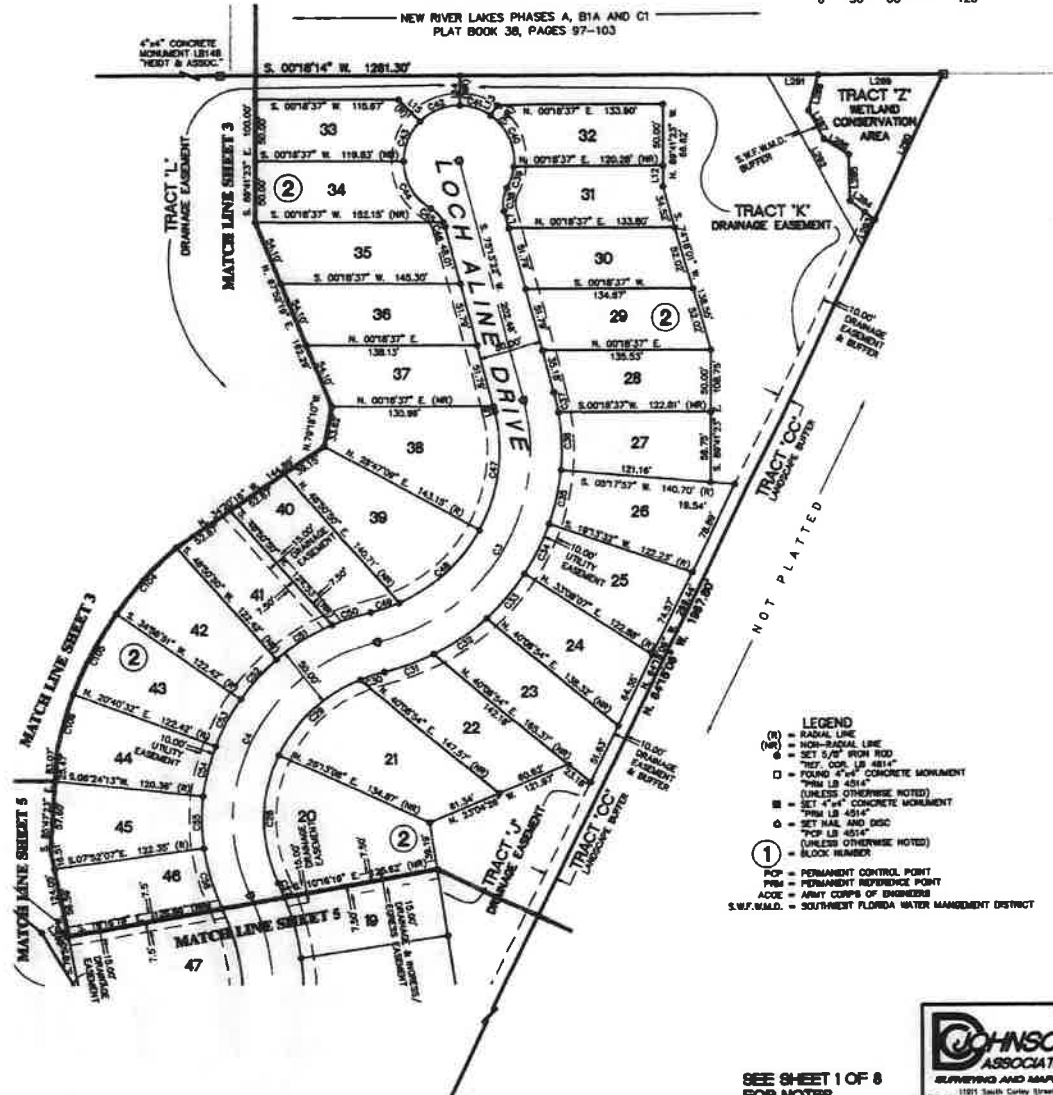


DRIVE DATA TABLE

NO.	STATION	BEGINNING	ENDING	LENGTH	BEARING	AREA	PERIMETER	PERCENTAGE
1	1+00	1+00	1+00	0.00				
2	1+00	1+00	1+00	0.00				
3	1+00	1+00	1+00	0.00				
4	1+00	1+00	1+00	0.00				
5	1+00	1+00	1+00	0.00				
6	1+00	1+00	1+00	0.00				
7	1+00	1+00	1+00	0.00				
8	1+00	1+00	1+00	0.00				
9	1+00	1+00	1+00	0.00				
10	1+00	1+00	1+00	0.00				
11	1+00	1+00	1+00	0.00				
12	1+00	1+00	1+00	0.00				
13	1+00	1+00	1+00	0.00				
14	1+00	1+00	1+00	0.00				
15	1+00	1+00	1+00	0.00				
16	1+00	1+00	1+00	0.00				
17	1+00	1+00	1+00	0.00				
18	1+00	1+00	1+00	0.00				
19	1+00	1+00	1+00	0.00				
20	1+00	1+00	1+00	0.00				
21	1+00	1+00	1+00	0.00				
22	1+00	1+00	1+00	0.00				
23	1+00	1+00	1+00	0.00				
24	1+00	1+00	1+00	0.00				
25	1+00	1+00	1+00	0.00				
26	1+00	1+00	1+00	0.00				
27	1+00	1+00	1+00	0.00				
28	1+00	1+00	1+00	0.00				
29	1+00	1+00	1+00	0.00				
30	1+00	1+00	1+00	0.00				
31	1+00	1+00	1+00	0.00				
32	1+00	1+00	1+00	0.00				
33	1+00	1+00	1+00	0.00				
34	1+00	1+00	1+00	0.00				
35	1+00	1+00	1+00	0.00				
36	1+00	1+00	1+00	0.00				
37	1+00	1+00	1+00	0.00				
38	1+00	1+00	1+00	0.00				
39	1+00	1+00	1+00	0.00				
40	1+00	1+00	1+00	0.00				
41	1+00	1+00	1+00	0.00				
42	1+00	1+00	1+00	0.00				
43	1+00	1+00	1+00	0.00				
44	1+00	1+00	1+00	0.00				
45	1+00	1+00	1+00	0.00				
46	1+00	1+00	1+00	0.00				
47	1+00	1+00	1+00	0.00				

LINE TABLE

NO.	STATION	BEGINNING	ENDING	LENGTH	BEARING	AREA	PERIMETER	PERCENTAGE
1	1+00	1+00	1+00	0.00				
2	1+00	1+00	1+00	0.00				
3	1+00	1+00	1+00	0.00				
4	1+00	1+00	1+00	0.00				
5	1+00	1+00	1+00	0.00				
6	1+00	1+00	1+00	0.00				
7	1+00	1+00	1+00	0.00				
8	1+00	1+00	1+00	0.00				
9	1+00	1+00	1+00	0.00				
10	1+00	1+00	1+00	0.00				
11	1+00	1+00	1+00	0.00				
12	1+00	1+00	1+00	0.00				
13	1+00	1+00	1+00	0.00				
14	1+00	1+00	1+00	0.00				
15	1+00	1+00	1+00	0.00				
16	1+00	1+00	1+00	0.00				
17	1+00	1+00	1+00	0.00				
18	1+00	1+00	1+00	0.00				
19	1+00	1+00	1+00	0.00				
20	1+00	1+00	1+00	0.00				
21	1+00	1+00	1+00	0.00				
22	1+00	1+00	1+00	0.00				
23	1+00	1+00	1+00	0.00				
24	1+00	1+00	1+00	0.00				
25	1+00	1+00	1+00	0.00				
26	1+00	1+00	1+00	0.00				
27	1+00	1+00	1+00	0.00				
28	1+00	1+00	1+00	0.00				
29	1+00	1+00	1+00	0.00				
30	1+00	1+00	1+00	0.00				
31	1+00	1+00	1+00	0.00				
32	1+00	1+00	1+00	0.00				
33	1+00	1+00	1+00	0.00				
34	1+00	1+00	1+00	0.00				
35	1+00	1+00	1+00	0.00				
36	1+00	1+00	1+00	0.00				
37	1+00	1+00	1+00	0.00				
38	1+00	1+00	1+00	0.00				
39	1+00	1+00	1+00	0.00				
40	1+00	1+00	1+00	0.00				
41	1+00	1+00	1+00	0.00				
42	1+00	1+00	1+00	0.00				
43	1+00	1+00	1+00	0.00				
44	1+00	1+00	1+00	0.00				
45	1+00	1+00	1+00	0.00				
46	1+00	1+00	1+00	0.00				
47	1+00	1+00	1+00	0.00				



- LEGEND**
- (R) = RADIAL LINE
 - - - = NON-RADIAL LINE
 - = SET 5/8" FROM ROD
 - = FOUND 4" CONCRETE MONUMENT
 - (PRM LB 4514)
 - (UNLESS OTHERWISE NOTED)
 - = SET 4" CONCRETE MONUMENT
 - (PRM LB 4514)
 - ◇ = SET NAIL AND DISC
 - (PCP LB 4514)
 - (UNLESS OTHERWISE NOTED)
 - ① = BLOCK NUMBER
 - PCP = PERMANENT CONTROL POINT
 - PRM = PERMANENT REFERENCE POINT
 - ACOE = ARMY CORPS OF ENGINEERS
 - S.W.F.M.D. = SOUTH FLORIDA WATER MANAGEMENT DISTRICT

SEE SHEET 1 OF 8
FOR NOTES

LB4014

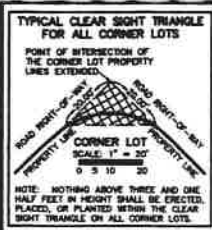
JOHNSON
ASSOCIATES
SURVEYING AND MAPPING

1101 South Curlew Street
P.O. Box 536, Tallahassee, Florida 32309
(904) 944-3148 • Fax: (904) 944-3753

ABERDEEN - PHASE TWO

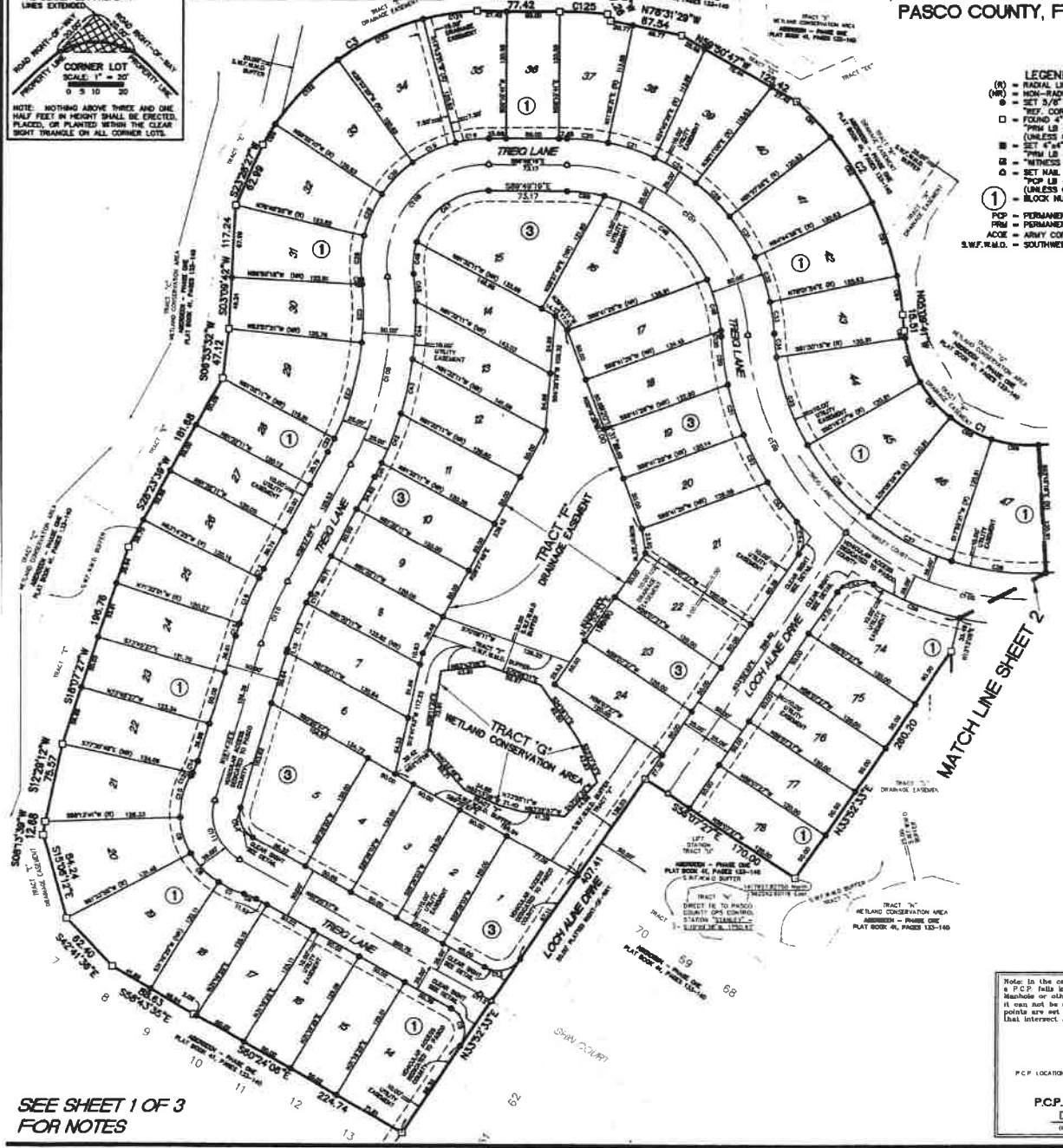
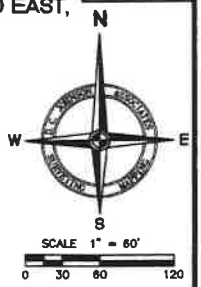
SECTION 10, TOWNSHIP 26 SOUTH, RANGE 20 EAST, PASCO COUNTY, FLORIDA

PLAT BOOK
PAGE
SHEET 3 OF 3



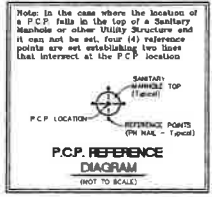
REGULATED UTILITY, BUFFER, WETLAND BUFFER, DRAINAGE EASEMENT, AND/OR OTHER RIGHTS ARE RESERVED AND ARE DEEMED TO HAVE PRIORITY OVER ALL RIGHTS RESERVED HEREIN UNLESS OTHERWISE NOTED BY THE NUMBER OF A FOOT.

- LEGEND**
- (S) = RADIAL LINE
 - (NS) = NON-RADIAL LINE
 - = SET 3/8" HIGH ROD
 - = FOUND 4"x4" CONCRETE MONUMENT "TOP LB 4514"
 - = SET 4"x4" CONCRETE MONUMENT "TOP LB 4514"
 - = SET 3/8" HIGH ROD "TOP LB 4514"
 - = "WITNESS MONUMENT"
 - = SET 3/8" HIGH ROD AND DISC "TOP LB 4514"
 - ① = BLOCK NUMBER
 - POP = PERMANENT CONTROL POINT
 - PRM = PERMANENT REFERENCE POINT
 - ACEE = ARMY CORPS OF ENGINEERS
 - S.W.F.W.M.D. = SOUTHWEST FLORIDA WATER MANAGEMENT DISTRICT



CURVE	DELTA	STANGS	MC	CHORD	CHORD BEARING
1	115.00	10.00	10.00	10.00	90.00
2	115.00	10.00	10.00	10.00	90.00
3	115.00	10.00	10.00	10.00	90.00
4	115.00	10.00	10.00	10.00	90.00
5	115.00	10.00	10.00	10.00	90.00
6	115.00	10.00	10.00	10.00	90.00
7	115.00	10.00	10.00	10.00	90.00
8	115.00	10.00	10.00	10.00	90.00
9	115.00	10.00	10.00	10.00	90.00
10	115.00	10.00	10.00	10.00	90.00
11	115.00	10.00	10.00	10.00	90.00
12	115.00	10.00	10.00	10.00	90.00
13	115.00	10.00	10.00	10.00	90.00
14	115.00	10.00	10.00	10.00	90.00
15	115.00	10.00	10.00	10.00	90.00
16	115.00	10.00	10.00	10.00	90.00
17	115.00	10.00	10.00	10.00	90.00
18	115.00	10.00	10.00	10.00	90.00
19	115.00	10.00	10.00	10.00	90.00
20	115.00	10.00	10.00	10.00	90.00
21	115.00	10.00	10.00	10.00	90.00
22	115.00	10.00	10.00	10.00	90.00
23	115.00	10.00	10.00	10.00	90.00
24	115.00	10.00	10.00	10.00	90.00
25	115.00	10.00	10.00	10.00	90.00
26	115.00	10.00	10.00	10.00	90.00
27	115.00	10.00	10.00	10.00	90.00
28	115.00	10.00	10.00	10.00	90.00
29	115.00	10.00	10.00	10.00	90.00
30	115.00	10.00	10.00	10.00	90.00
31	115.00	10.00	10.00	10.00	90.00
32	115.00	10.00	10.00	10.00	90.00
33	115.00	10.00	10.00	10.00	90.00
34	115.00	10.00	10.00	10.00	90.00
35	115.00	10.00	10.00	10.00	90.00
36	115.00	10.00	10.00	10.00	90.00
37	115.00	10.00	10.00	10.00	90.00
38	115.00	10.00	10.00	10.00	90.00
39	115.00	10.00	10.00	10.00	90.00
40	115.00	10.00	10.00	10.00	90.00
41	115.00	10.00	10.00	10.00	90.00
42	115.00	10.00	10.00	10.00	90.00
43	115.00	10.00	10.00	10.00	90.00
44	115.00	10.00	10.00	10.00	90.00
45	115.00	10.00	10.00	10.00	90.00
46	115.00	10.00	10.00	10.00	90.00
47	115.00	10.00	10.00	10.00	90.00
48	115.00	10.00	10.00	10.00	90.00
49	115.00	10.00	10.00	10.00	90.00
50	115.00	10.00	10.00	10.00	90.00
51	115.00	10.00	10.00	10.00	90.00
52	115.00	10.00	10.00	10.00	90.00
53	115.00	10.00	10.00	10.00	90.00
54	115.00	10.00	10.00	10.00	90.00
55	115.00	10.00	10.00	10.00	90.00
56	115.00	10.00	10.00	10.00	90.00
57	115.00	10.00	10.00	10.00	90.00
58	115.00	10.00	10.00	10.00	90.00
59	115.00	10.00	10.00	10.00	90.00
60	115.00	10.00	10.00	10.00	90.00
61	115.00	10.00	10.00	10.00	90.00
62	115.00	10.00	10.00	10.00	90.00
63	115.00	10.00	10.00	10.00	90.00
64	115.00	10.00	10.00	10.00	90.00
65	115.00	10.00	10.00	10.00	90.00
66	115.00	10.00	10.00	10.00	90.00
67	115.00	10.00	10.00	10.00	90.00
68	115.00	10.00	10.00	10.00	90.00
69	115.00	10.00	10.00	10.00	90.00
70	115.00	10.00	10.00	10.00	90.00
71	115.00	10.00	10.00	10.00	90.00
72	115.00	10.00	10.00	10.00	90.00
73	115.00	10.00	10.00	10.00	90.00
74	115.00	10.00	10.00	10.00	90.00
75	115.00	10.00	10.00	10.00	90.00
76	115.00	10.00	10.00	10.00	90.00
77	115.00	10.00	10.00	10.00	90.00
78	115.00	10.00	10.00	10.00	90.00
79	115.00	10.00	10.00	10.00	90.00
80	115.00	10.00	10.00	10.00	90.00
81	115.00	10.00	10.00	10.00	90.00
82	115.00	10.00	10.00	10.00	90.00
83	115.00	10.00	10.00	10.00	90.00
84	115.00	10.00	10.00	10.00	90.00
85	115.00	10.00	10.00	10.00	90.00
86	115.00	10.00	10.00	10.00	90.00
87	115.00	10.00	10.00	10.00	90.00
88	115.00	10.00	10.00	10.00	90.00
89	115.00	10.00	10.00	10.00	90.00
90	115.00	10.00	10.00	10.00	90.00
91	115.00	10.00	10.00	10.00	90.00
92	115.00	10.00	10.00	10.00	90.00
93	115.00	10.00	10.00	10.00	90.00
94	115.00	10.00	10.00	10.00	90.00
95	115.00	10.00	10.00	10.00	90.00
96	115.00	10.00	10.00	10.00	90.00
97	115.00	10.00	10.00	10.00	90.00
98	115.00	10.00	10.00	10.00	90.00
99	115.00	10.00	10.00	10.00	90.00
100	115.00	10.00	10.00	10.00	90.00

SEE SHEET 1 OF 3
FOR NOTES



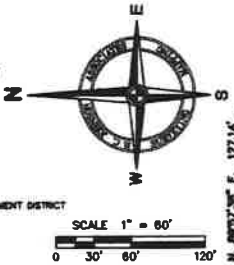
ABERDEEN - PHASE ONE

SECTION 10, TOWNSHIP 26 SOUTH, RANGE 20 EAST, PASCO COUNTY, FLORIDA

PLAT BOOK
PAGE
SHEET 3 OF 8

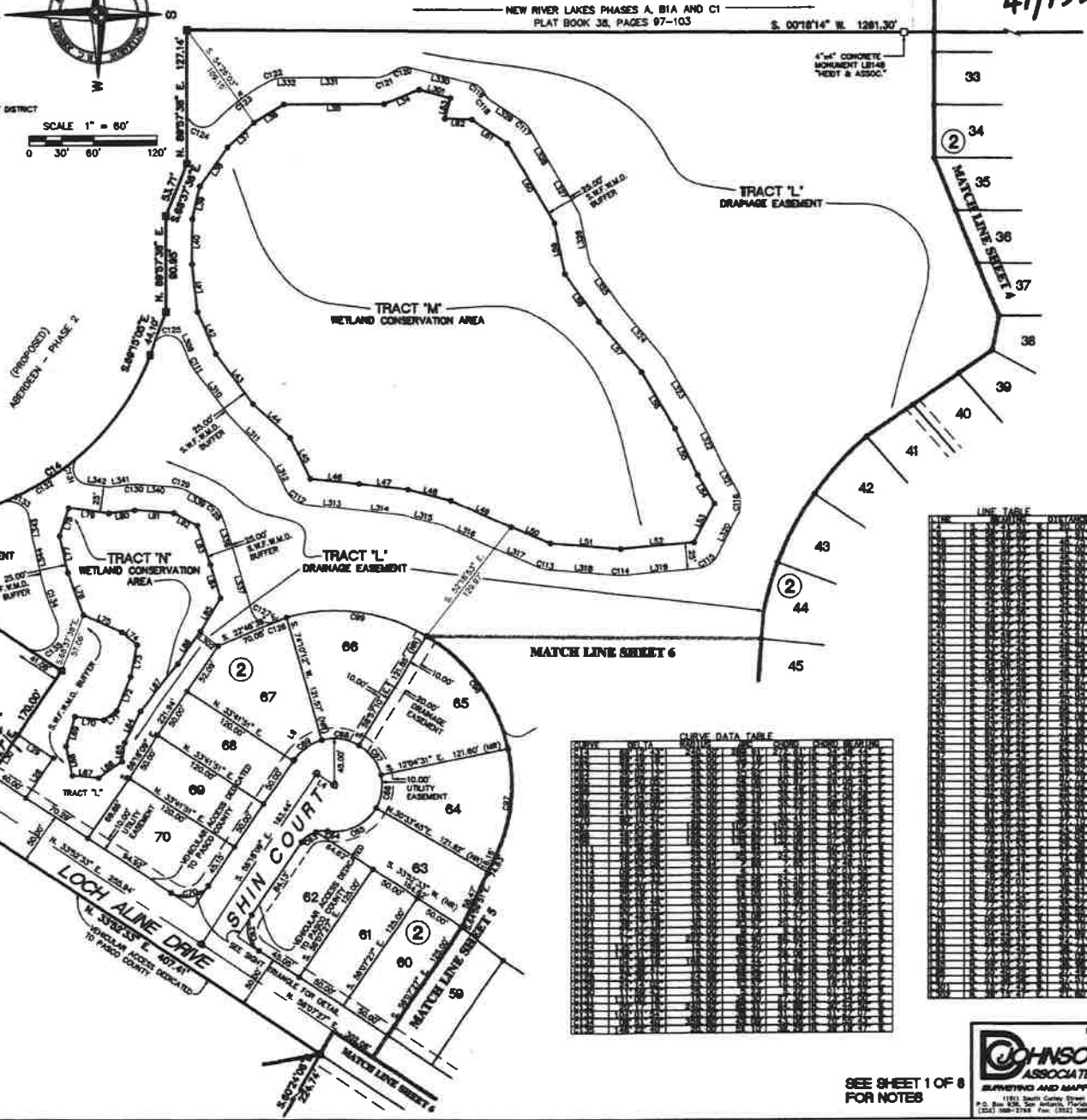
41/135

- LEGEND**
- = RADIAL LINE
 - = NON-RADIAL LINE
 - SET 8/16" HIGH ROD
 - TRIF. COIL LB 4514"
 - = FOUND 4"x4" CONCRETE MONUMENT
 - TRIM LB 4514"
 - (UNLESS OTHERWISE NOTED)
 - SET 4"x4" CONCRETE MONUMENT
 - TRIM LB 4514"
 - = SET NAIL AND DISC
 - TOP LB 4514"
 - (UNLESS OTHERWISE NOTED)
 - = BLOCK MARKER
 - ① = PERMANENT CONTROL POINT
 - PRM = PERMANENT REFERENCE POINT
 - AGCC = ARMY CORPS OF ENGINEERS
 - S.W.F.W.M.D. = SOUTHWEST FLORIDA WATER MANAGEMENT DISTRICT



LINE TABLE

LINE NO.	BEARING	DISTANCE	DATE
1	S. 89°02'22" E.	70.43	
2	N. 31°52'51" E.	280.20	
3	S. 89°02'22" E.	70.43	
4	N. 31°52'51" E.	280.20	
5	S. 89°02'22" E.	70.43	
6	N. 31°52'51" E.	280.20	
7	S. 89°02'22" E.	70.43	
8	N. 31°52'51" E.	280.20	
9	S. 89°02'22" E.	70.43	
10	N. 31°52'51" E.	280.20	
11	S. 89°02'22" E.	70.43	
12	N. 31°52'51" E.	280.20	
13	S. 89°02'22" E.	70.43	
14	N. 31°52'51" E.	280.20	
15	S. 89°02'22" E.	70.43	
16	N. 31°52'51" E.	280.20	
17	S. 89°02'22" E.	70.43	
18	N. 31°52'51" E.	280.20	
19	S. 89°02'22" E.	70.43	
20	N. 31°52'51" E.	280.20	
21	S. 89°02'22" E.	70.43	
22	N. 31°52'51" E.	280.20	
23	S. 89°02'22" E.	70.43	
24	N. 31°52'51" E.	280.20	
25	S. 89°02'22" E.	70.43	
26	N. 31°52'51" E.	280.20	
27	S. 89°02'22" E.	70.43	
28	N. 31°52'51" E.	280.20	
29	S. 89°02'22" E.	70.43	
30	N. 31°52'51" E.	280.20	
31	S. 89°02'22" E.	70.43	
32	N. 31°52'51" E.	280.20	
33	S. 89°02'22" E.	70.43	
34	N. 31°52'51" E.	280.20	
35	S. 89°02'22" E.	70.43	
36	N. 31°52'51" E.	280.20	
37	S. 89°02'22" E.	70.43	
38	N. 31°52'51" E.	280.20	
39	S. 89°02'22" E.	70.43	
40	N. 31°52'51" E.	280.20	
41	S. 89°02'22" E.	70.43	
42	N. 31°52'51" E.	280.20	
43	S. 89°02'22" E.	70.43	
44	N. 31°52'51" E.	280.20	
45	S. 89°02'22" E.	70.43	



CURVE DATA TABLE

LINE NO.	BEARING	DISTANCE	DATE
1	S. 89°02'22" E.	70.43	
2	N. 31°52'51" E.	280.20	
3	S. 89°02'22" E.	70.43	
4	N. 31°52'51" E.	280.20	
5	S. 89°02'22" E.	70.43	
6	N. 31°52'51" E.	280.20	
7	S. 89°02'22" E.	70.43	
8	N. 31°52'51" E.	280.20	
9	S. 89°02'22" E.	70.43	
10	N. 31°52'51" E.	280.20	
11	S. 89°02'22" E.	70.43	
12	N. 31°52'51" E.	280.20	
13	S. 89°02'22" E.	70.43	
14	N. 31°52'51" E.	280.20	
15	S. 89°02'22" E.	70.43	
16	N. 31°52'51" E.	280.20	
17	S. 89°02'22" E.	70.43	
18	N. 31°52'51" E.	280.20	
19	S. 89°02'22" E.	70.43	
20	N. 31°52'51" E.	280.20	
21	S. 89°02'22" E.	70.43	
22	N. 31°52'51" E.	280.20	
23	S. 89°02'22" E.	70.43	
24	N. 31°52'51" E.	280.20	
25	S. 89°02'22" E.	70.43	
26	N. 31°52'51" E.	280.20	
27	S. 89°02'22" E.	70.43	
28	N. 31°52'51" E.	280.20	
29	S. 89°02'22" E.	70.43	
30	N. 31°52'51" E.	280.20	
31	S. 89°02'22" E.	70.43	
32	N. 31°52'51" E.	280.20	
33	S. 89°02'22" E.	70.43	
34	N. 31°52'51" E.	280.20	
35	S. 89°02'22" E.	70.43	
36	N. 31°52'51" E.	280.20	
37	S. 89°02'22" E.	70.43	
38	N. 31°52'51" E.	280.20	
39	S. 89°02'22" E.	70.43	
40	N. 31°52'51" E.	280.20	
41	S. 89°02'22" E.	70.43	
42	N. 31°52'51" E.	280.20	
43	S. 89°02'22" E.	70.43	
44	N. 31°52'51" E.	280.20	
45	S. 89°02'22" E.	70.43	

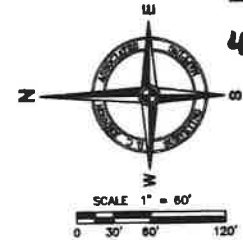
LINE TABLE

LINE NO.	BEARING	DISTANCE	DATE
1	S. 89°02'22" E.	70.43	
2	N. 31°52'51" E.	280.20	
3	S. 89°02'22" E.	70.43	
4	N. 31°52'51" E.	280.20	
5	S. 89°02'22" E.	70.43	
6	N. 31°52'51" E.	280.20	
7	S. 89°02'22" E.	70.43	
8	N. 31°52'51" E.	280.20	
9	S. 89°02'22" E.	70.43	
10	N. 31°52'51" E.	280.20	
11	S. 89°02'22" E.	70.43	
12	N. 31°52'51" E.	280.20	
13	S. 89°02'22" E.	70.43	
14	N. 31°52'51" E.	280.20	
15	S. 89°02'22" E.	70.43	
16	N. 31°52'51" E.	280.20	
17	S. 89°02'22" E.	70.43	
18	N. 31°52'51" E.	280.20	
19	S. 89°02'22" E.	70.43	
20	N. 31°52'51" E.	280.20	
21	S. 89°02'22" E.	70.43	
22	N. 31°52'51" E.	280.20	
23	S. 89°02'22" E.	70.43	
24	N. 31°52'51" E.	280.20	
25	S. 89°02'22" E.	70.43	
26	N. 31°52'51" E.	280.20	
27	S. 89°02'22" E.	70.43	
28	N. 31°52'51" E.	280.20	
29	S. 89°02'22" E.	70.43	
30	N. 31°52'51" E.	280.20	
31	S. 89°02'22" E.	70.43	
32	N. 31°52'51" E.	280.20	
33	S. 89°02'22" E.	70.43	
34	N. 31°52'51" E.	280.20	
35	S. 89°02'22" E.	70.43	
36	N. 31°52'51" E.	280.20	
37	S. 89°02'22" E.	70.43	
38	N. 31°52'51" E.	280.20	
39	S. 89°02'22" E.	70.43	
40	N. 31°52'51" E.	280.20	
41	S. 89°02'22" E.	70.43	
42	N. 31°52'51" E.	280.20	
43	S. 89°02'22" E.	70.43	
44	N. 31°52'51" E.	280.20	
45	S. 89°02'22" E.	70.43	

SEE SHEET 1 OF 8 FOR NOTES

JOHNSON ASSOCIATES
SURVEYING AND MAPPING
1181 South Curry Street
P.O. Box 826, San Antonio, Florida 32519
(352) 388-1748 Fax: (352) 388-2713

41/138



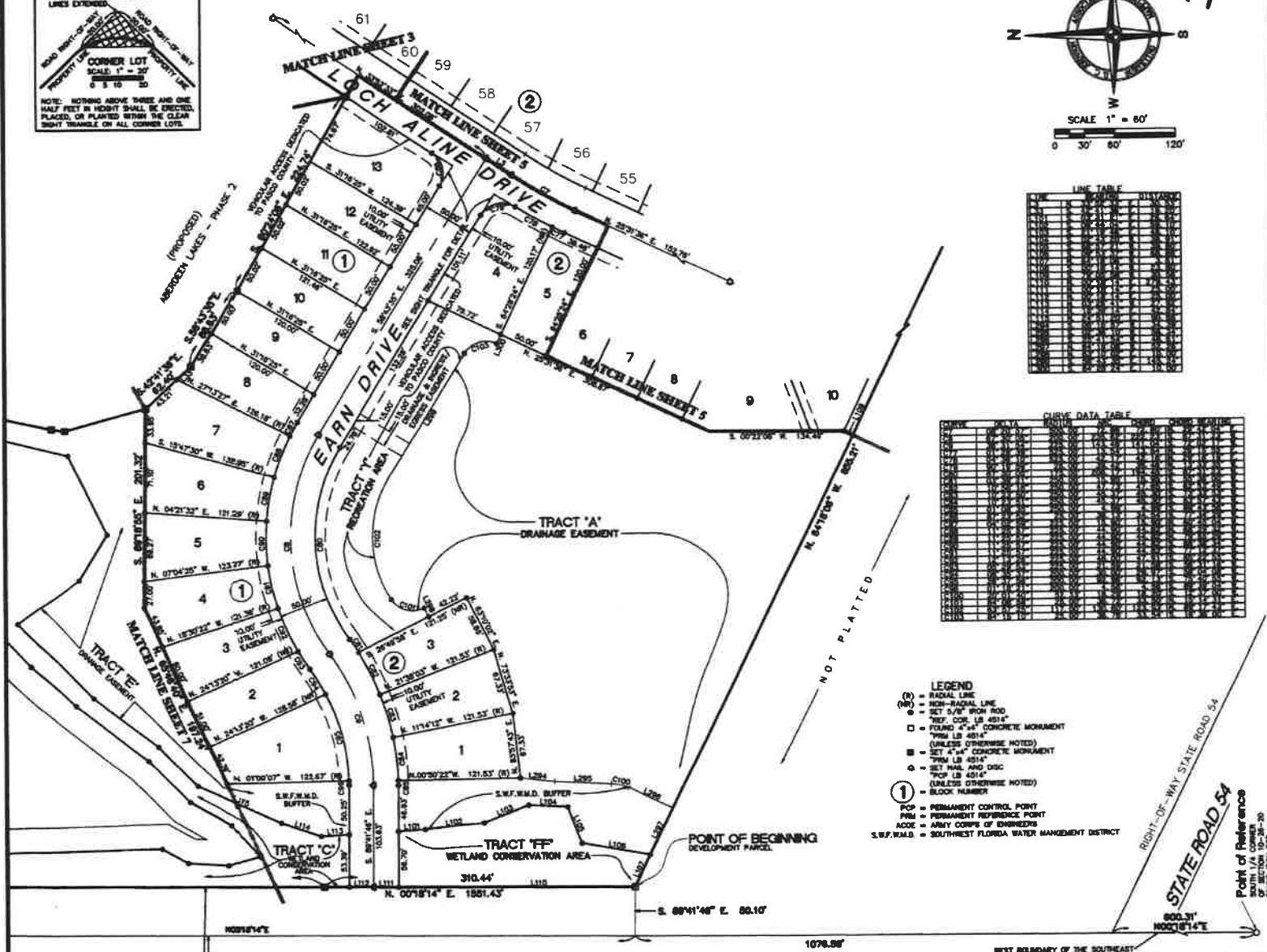
LINE TABLE

LINE NO.	BEARING	DISTANCE	AREA	PERIMETER
1	N. 89°11'46" E.	80.10'		
2	S. 88°11'46" E.	80.10'		
3	N. 00°18'14" E.	1881.43'		
4	S. 89°11'46" E.	80.10'		
5	N. 00°18'14" E.	1881.43'		
6	S. 89°11'46" E.	80.10'		
7	N. 00°18'14" E.	1881.43'		
8	S. 89°11'46" E.	80.10'		
9	N. 00°18'14" E.	1881.43'		
10	S. 89°11'46" E.	80.10'		
11	N. 00°18'14" E.	1881.43'		
12	S. 89°11'46" E.	80.10'		
13	N. 00°18'14" E.	1881.43'		
14	S. 89°11'46" E.	80.10'		
15	N. 00°18'14" E.	1881.43'		
16	S. 89°11'46" E.	80.10'		
17	N. 00°18'14" E.	1881.43'		
18	S. 89°11'46" E.	80.10'		
19	N. 00°18'14" E.	1881.43'		
20	S. 89°11'46" E.	80.10'		
21	N. 00°18'14" E.	1881.43'		
22	S. 89°11'46" E.	80.10'		
23	N. 00°18'14" E.	1881.43'		
24	S. 89°11'46" E.	80.10'		
25	N. 00°18'14" E.	1881.43'		
26	S. 89°11'46" E.	80.10'		
27	N. 00°18'14" E.	1881.43'		
28	S. 89°11'46" E.	80.10'		
29	N. 00°18'14" E.	1881.43'		
30	S. 89°11'46" E.	80.10'		
31	N. 00°18'14" E.	1881.43'		
32	S. 89°11'46" E.	80.10'		
33	N. 00°18'14" E.	1881.43'		
34	S. 89°11'46" E.	80.10'		
35	N. 00°18'14" E.	1881.43'		
36	S. 89°11'46" E.	80.10'		
37	N. 00°18'14" E.	1881.43'		
38	S. 89°11'46" E.	80.10'		
39	N. 00°18'14" E.	1881.43'		
40	S. 89°11'46" E.	80.10'		
41	N. 00°18'14" E.	1881.43'		
42	S. 89°11'46" E.	80.10'		
43	N. 00°18'14" E.	1881.43'		
44	S. 89°11'46" E.	80.10'		
45	N. 00°18'14" E.	1881.43'		
46	S. 89°11'46" E.	80.10'		
47	N. 00°18'14" E.	1881.43'		
48	S. 89°11'46" E.	80.10'		
49	N. 00°18'14" E.	1881.43'		
50	S. 89°11'46" E.	80.10'		
51	N. 00°18'14" E.	1881.43'		
52	S. 89°11'46" E.	80.10'		
53	N. 00°18'14" E.	1881.43'		
54	S. 89°11'46" E.	80.10'		
55	N. 00°18'14" E.	1881.43'		
56	S. 89°11'46" E.	80.10'		
57	N. 00°18'14" E.	1881.43'		
58	S. 89°11'46" E.	80.10'		
59	N. 00°18'14" E.	1881.43'		
60	S. 89°11'46" E.	80.10'		
61	N. 00°18'14" E.	1881.43'		

CURVE DATA TABLE

LINE NO.	BEARING	DISTANCE	AREA	PERIMETER
1	N. 89°11'46" E.	80.10'		
2	S. 88°11'46" E.	80.10'		
3	N. 00°18'14" E.	1881.43'		
4	S. 89°11'46" E.	80.10'		
5	N. 00°18'14" E.	1881.43'		
6	S. 89°11'46" E.	80.10'		
7	N. 00°18'14" E.	1881.43'		
8	S. 89°11'46" E.	80.10'		
9	N. 00°18'14" E.	1881.43'		
10	S. 89°11'46" E.	80.10'		
11	N. 00°18'14" E.	1881.43'		
12	S. 89°11'46" E.	80.10'		
13	N. 00°18'14" E.	1881.43'		
14	S. 89°11'46" E.	80.10'		
15	N. 00°18'14" E.	1881.43'		
16	S. 89°11'46" E.	80.10'		
17	N. 00°18'14" E.	1881.43'		
18	S. 89°11'46" E.	80.10'		
19	N. 00°18'14" E.	1881.43'		
20	S. 89°11'46" E.	80.10'		
21	N. 00°18'14" E.	1881.43'		
22	S. 89°11'46" E.	80.10'		
23	N. 00°18'14" E.	1881.43'		
24	S. 89°11'46" E.	80.10'		
25	N. 00°18'14" E.	1881.43'		
26	S. 89°11'46" E.	80.10'		
27	N. 00°18'14" E.	1881.43'		
28	S. 89°11'46" E.	80.10'		
29	N. 00°18'14" E.	1881.43'		
30	S. 89°11'46" E.	80.10'		
31	N. 00°18'14" E.	1881.43'		
32	S. 89°11'46" E.	80.10'		
33	N. 00°18'14" E.	1881.43'		
34	S. 89°11'46" E.	80.10'		
35	N. 00°18'14" E.	1881.43'		
36	S. 89°11'46" E.	80.10'		
37	N. 00°18'14" E.	1881.43'		
38	S. 89°11'46" E.	80.10'		
39	N. 00°18'14" E.	1881.43'		
40	S. 89°11'46" E.	80.10'		
41	N. 00°18'14" E.	1881.43'		
42	S. 89°11'46" E.	80.10'		
43	N. 00°18'14" E.	1881.43'		
44	S. 89°11'46" E.	80.10'		
45	N. 00°18'14" E.	1881.43'		
46	S. 89°11'46" E.	80.10'		
47	N. 00°18'14" E.	1881.43'		
48	S. 89°11'46" E.	80.10'		
49	N. 00°18'14" E.	1881.43'		
50	S. 89°11'46" E.	80.10'		
51	N. 00°18'14" E.	1881.43'		
52	S. 89°11'46" E.	80.10'		
53	N. 00°18'14" E.	1881.43'		
54	S. 89°11'46" E.	80.10'		
55	N. 00°18'14" E.	1881.43'		
56	S. 89°11'46" E.	80.10'		
57	N. 00°18'14" E.	1881.43'		
58	S. 89°11'46" E.	80.10'		
59	N. 00°18'14" E.	1881.43'		
60	S. 89°11'46" E.	80.10'		
61	N. 00°18'14" E.	1881.43'		

- LEGEND
- (R) = RADIAL LINE
 - (NR) = NON-RADIAL LINE
 - SET 5/8" IRON ROD
 - SET 4" CONCRETE MONUMENT
 - FOUND 4" CONCRETE MONUMENT
 - TRIM LB 4014 (UNLESS OTHERWISE NOTED)
 - SET 4" CONCRETE MONUMENT
 - TRIM LB 4014 (UNLESS OTHERWISE NOTED)
 - SET IRON AND DISC
 - POP LB 4014 (UNLESS OTHERWISE NOTED)
 - BLOCK NUMBER
 - POP = PERMANENT CONTROL POINT
 - PRM = PERMANENT REFERENCE POINT
 - ACOE = ARMY CORPS OF ENGINEERS
 - S.W.F.W.M.D. = SOUTHWEST FLORIDA WATER MANAGEMENT DISTRICT



RIGHT-OF-WAY STATE ROAD 54
STATE ROAD 54
Point of Reference
SOUTH 1/4 CORNER
OF SECTION 10-26-20
FOUNDED IRON ROD

184514

11111 South County Street
P.O. Box 1000, Fort Myers, Florida 33919
(202) 588-2768 Fax (202) 588-2713

SEE SHEET 1 OF 8
FOR NOTES

100' BUFFER ADDRESS
EASEMENT FOR OFFICIAL
PLAT BOOK 1978,
PAGE 1616

NOT PLATTED

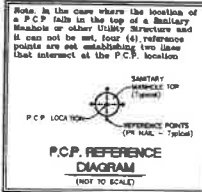
1076.98'

WEST BOUNDARY OF THE SOUTHEAST
1/4 OF SECTION 10-26-20

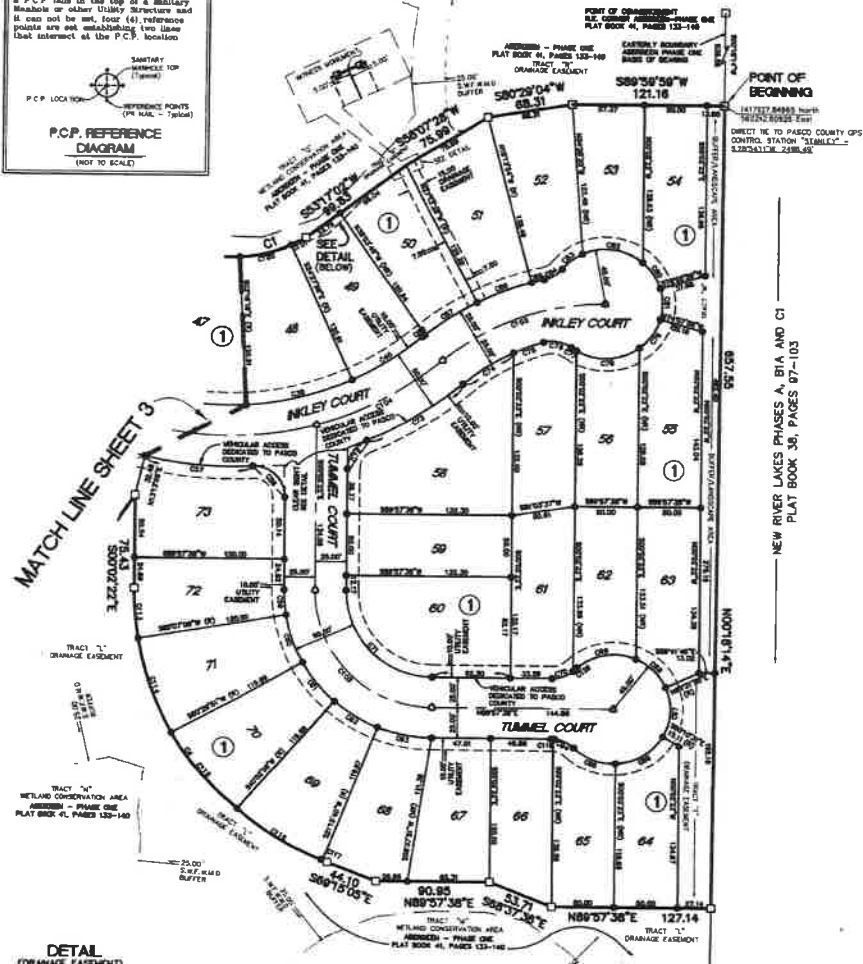
ABERDEEN - PHASE TWO

SECTION 10, TOWNSHIP 26 SOUTH, RANGE 20 EAST,
PASCO COUNTY, FLORIDA

PLAT BOOK
PAGE
SHEET 2 OF 3



- LEGEND**
- (R) = RADIAL LINE
 - (NR) = NON-RADIAL LINE
 - = SET 5/8" IRON ROD
 - = REF. COR. LB. 4514
 - = FOUND 4" 4# CONCRETE MONUMENT
 - = "TRIM LB. 4514"
 - (UNLESS OTHERWISE NOTED)
 - = SET 4" 4# CONCRETE MONUMENT
 - = "WITNESS MONUMENT"
 - = SET NAIL AND DISC
 - = "TRIP LB. 4514"
 - (UNLESS OTHERWISE NOTED)
 - ① = BLOCK NUMBER
 - PCP = PERMANENT CONTROL POINT
 - PRM = PERMANENT REFERENCE POINT
 - ACEE = ARMY CORPS OF ENGINEERS
 - S.W.F.W.M.D. = SOUTHWEST FLORIDA WATER MANAGEMENT DISTRICT



CURVE TABLE

CHORD	DELTA	RADIUS	ARC	CHORD	CHORD BEARING
C1	1129.17	141.98	140.47	20.81	S89°58'30\"/>



INDICATES UTILITY, BUFFER, WETLAND BUFFER, DRAINAGE EASEMENT WITH SIZE AND TYPE AS LISTED AND ARE ASSUMED TO HAVE MEASUREMENTS MADE TO THE NEAREST ONE HUNDRETH OF A FOOT

SEE SHEET 1 OF 3
FOR NOTES

JOHNSON ASSOCIATES
SURVEYING AND MAPPING
1911 South Curry Street
San Antonio, Florida 32218
(321) 589-3788 Fax (321) 589-3111